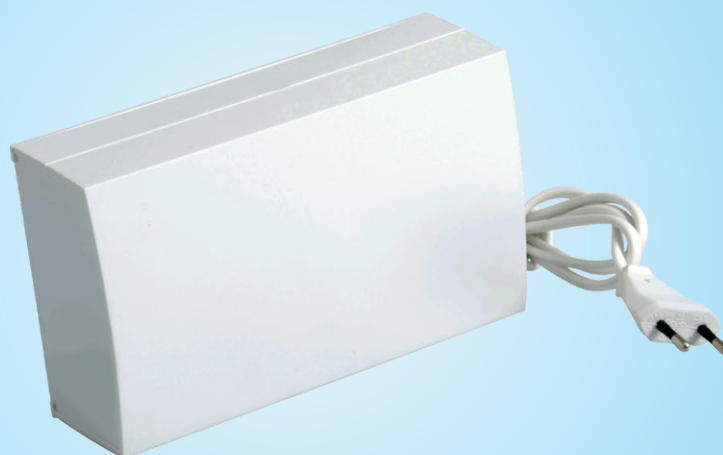


WUC102

COMFORT CONTROL 1-ZONE 3A



Description

- for 24 VDC window actuators
- 1 comfort ventilation group up to max.3A
- can be combined with external temperature sensor, timer or BMS
- wind/rain sensor can be connected
- multiple devices can be linked to form large groups

The control unit can be used for operation of 24 VDC window actuators and other electric accessory products (e.g. Venetian blinds) with a total power consumption of max 3A.

The WUC 102 is as standard equipped with an output voltage area of 20-30V.

The control unit has 2 clamp connections for motors as well as 3 signal inputs (A,B,C) for "OPEN/CLOSE" function for sensors (only use potential free switches) and keypads (switches). It is also possible to connect WSK 100 or WUI 110 keypad.

The WUC 102 is fitted with current measurement, which will disconnect the control unit if temporarily overloaded.

Input signal is to be potential free.

- ventilation function in 1 group up to max. 3A
- OPEN/CLOSE manually by external ventilation switch
- 3 potentialfree inputs (OPEN/CLOSE) with priority sequence with the possibility of connecting wind/rain sensor, timer, thermostat and keypads.

Specifications	
Primary voltage	230V AC $\pm 10\%$, 300VA, 50Hz
Inrush current on primary side	max. 10A < 10msec
Secondary voltage	low: 17-27V DC high: 20-30V DC (standard) max. current: $\pm 24V$ DC / 3A
Standby consumption	3W at 230V
Ripple at full load	10% (2Vpp)
Open circuit	30V at 53V
Operating condition	-5°C - +45°C, for indoor installation, the control unit may not be covered
Switch on duration	ED 40% (max. 2 min. per 5min.)
Output fuse	6.3 AT

Smoke Control Solutions Ltd - Faraday Court, Faraday Road, Crawley, West Sussex RH10 9PU

Tel: 0845 500 9000 Fax: 0845 500 7000

Email info@smokecontrolsolutions.com - Web: www.smokecontrolsolutions.com

COMFORT CONTROL 1-ZONE 3A

Specifications (continued)	
Material	polycarbonate, fire retardant according to UL 94-5V
Colour	white (NCS 1000)
Size	180 x 110 x 70mm (W x H x D)
Weight	1.4kg
Protection type	IP20
Delivery	control unit with 1.2m cable and standard plug for connection to the mains supply
Note	we reserve the right to make technical changes

Items	Item no.
UniControl control unit	WUC 102 0103
UniControl control unit (UK version, 240V AC)	WUC 102 0403

Accessories	Item no.
UniControl operating keypad	WUI 110 0102
Ventilation push-button, flush mounting	WSK 100 1161
Room thermostat	WLA 110
Timer 230V AC (wall mounting surround WLA 122 to be ordered separately)	WLA 120
Wind/rain sensor	WLA 330
Rain sensor	WLA 331