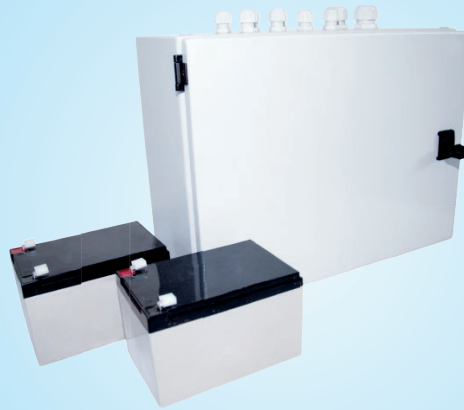


WSC316

# SMOKE CONTROL PANEL 16A 1-ZONE



## Application

- 1 smoke / comfort ventilation group
- control of window actuators up to 16A
- with microprocessor
- tested according to VdS 2581 and 2593 (approval-no.: G505012)
- smoke extraction and comfort ventilation in small or medium sized buildings
- expandable with additional modules
- incl. 2 pcs. back-up batteries

Smoke control panel for control of 24 VDC actuators of smoke extraction combined with daily comfort ventilation.

The smoke control panel is especially suitable for the surveillance of smaller areas, e.g. staircases and smaller restaurants.

By linking several smoke control panels in a master/slave system, the smoke control panel can also be used in larger buildings (requires master/slave module WSA 301).

The smoke control panel is authorized in accordance with guidelines of the VDS 2581 and VdS 2593.

## Special technical features

- for smoke ventilation combined with comfort ventilation
- built-in uninterruptible power supply (min. 72h battery back-up in case of voltage loss)
- cable surveillance on break glass unit
- cable surveillance on smoke detector input (if used)
- survey on actuator outlet
- breakage of smoke signal lines 1 and 2 are seen separately via diodes on the bottom plate

- fault display on diagnostic LEDs
- incident reporting is programmable as smoke triggering
- smoke triggering when temperature inside the compact unit exceeds 72°C
- integrated gap ventilation function
- integrated ventilation time
- built-in maintenance interval function with LEDs and acoustic signaller (acoustic signaller only when primary break glass unit WSK 320 is installed)
- grey housing for surface mounting
- IP54

## Connection options

- actuators with end switches or electronical load switch of
- tripping by BMS via potential-free contact (ASV module WSA 305 required)
- motor current 16A (2 motor circuits)
- in connection with comfort ventilation signals from BMS units can be received
- wind/rain sensor without additional plug-in module
- 15 ventilation keypads with display or any number without display
- 10 smoke detectors type WSA 300 61 or WSA 310
- 2 break glass units (primary) type WSK 320 or Type WSK 321
- 15 break glass units (secondary) Type WSK 330

WSC316

# SMOKE CONTROL PANEL 16A 1-ZONE

Specifications		
Primary voltage	230 VAC ±10%	
Secondary voltage	max. open circuit voltage at 230 VAC motor voltage is rated load max. ripple	28.0 VDC 22.7 VDC 4.0 Vpp
Output current	max. 16A	
Emergency power supply	> 72h	
Operating condition	-5°C - +40°C	
Material	steel housing for surface mounting	
Colour	grey (RAL 7035)	
Size	400 x 300 x 180mm (W x H x D)	
Weight	17kg excl. batteries / 25kg incl. batteries	
IP rating	IP54	
Delivery includes	smoke control panel with 2 pcs. back-up batteries 12V/12Ah (WSA 012)	
Note	we reserve the right to make technical changes	

Item	Item no.
Smoke control panel 16A, VdS tested	WSC 316 61

Accessories	Item no.
Linking of wind/rain signal	WSA 302
ASV module (master/slave)	WSA 305
Alarm and fault module	WSA 308
End module	WSA 432
Smoke detector end module	WSA 435
Lock cylinder incl. key	WSA 438

Smoke Control Solutions Ltd - Faraday Court, Faraday Road, Crawley, West Sussex RH10 9PU

Tel: 0845 500 9000 Fax: 0845 500 7000

Email [info@smokecontrolsolutions.com](mailto:info@smokecontrolsolutions.com) - Web: [www.smokecontrolsolutions.com](http://www.smokecontrolsolutions.com)

©Smoke Control Solutions Ltd 2013