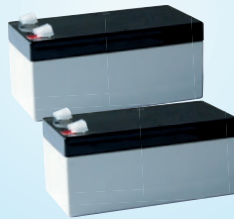


WSC204

SMOKE CONTROL PANEL 4.8A 1-ZONE



WSC 204 / 204BZ – plastic housing



WSC 204MH – steel housing

Application

- 1 smoke / comfort ventilation group
- control of window actuators up to 4.8A
- with microprocessor
- smoke extraction and comfort ventilation in smaller and medium sized buildings
- expandable with additional modules
- incl. 2 pcs. back-up batteries

Smoke control panel for control of 24 VDC actuators for smoke extraction and daily comfort ventilation.

The smoke control panel is especially suitable for surveillance of smaller areas, e.g. staircases, smaller sport centres and restaurants.

By linking several smoke control panels in a master/slave system, the smoke control unit can also be used in larger buildings (master/slave module type WSA 301 required).

Special technical features

- for smoke extraction combined with comfort ventilation
- built-in uninterruptible power supply 2 pcs. WSA 003 (min. 72h battery back-up in case of voltage loss)
- cable surveillance on break glass unit
- cable surveillance on smoke detector input (if used)
- survey on actuator outlet
- breakage of smoke signal lines 1 and 2 are seen separately via diodes on the bottom plate
- fault display via diagnostic LEDs
- incident reporting is programmable as smoke triggering
- smoke triggering when temperature inside the compact unit exceeds 72°C

Connection options

- actuator with end switch or electronic load switch off
- tripping by BMS via potential-free contact (ASV module WSA 306 required)
- in connection with comfort ventilation signals from BMS units can be received
- wind/rain sensor without additional plug in module
- 15 ventilation keypads with "indicator" or as many "open" indicators
- 10 smoke detectors type WSA 300 61 or WSA 310
- 4 break glass units (primary), type WSK 320 or type WSK 321
- 15 break glass units (secondary), type WSK 330

SMOKE CONTROL PANEL 4.8A 1-ZONE

Specifications		
Output current	max. 4.8A	
Primary voltage	230 VAC \pm 10%, 150W, 50/60Hz	
Secondary voltage	open circuit voltage at 230 VAC motor voltage at 230 VAC / 4A load ripple at max. load	typ. 32VDC typ. 28VDC max. 6% (= 3,5Vpp)
Inrush current	max. 6A<5msec	
Standby consumption	4W	
Emergency power supply	>72h	
Operating condition	-5°C - +40°C, max. 90% relative humidity (not condensing)	
Switch-on-duration	ED max. 40% (max. 4 min per 10 min)	
Material	WSC 204/204BZ: plastic housing for countersunk or surface mounting WSC 204MH: steel housing for surface mounting	
Colour	WSC 204/204BZ: white (RAL 9016) WSC 204MH: grey (RAL 7035)	
Size	WSC 204/204BZ: 368 x 353mm (W x H) surface mounting D=97mm countersunk mounting D=95mm, hole in wall 325 \pm 5 x 311 \pm 5 x min. 80mm (W x H x D) WSC 204MH: 300 x 300 x 120mm (WxHxD)	
Weight	WSC 204/204BZ: 4.7kg excl. batteries / 7.5kg incl. batteries WSC 204MH: 6kg excl. batteries / 10kg incl. batteries	
IP rating	WSC 204/204BZ: IP20, WSC 204MH: IP54	
Delivery includes	smoke control panel with 2 pcs. back-up batteries 12V/3.4Ah (2 x WSA 003) and WSC 204/204BZ also with a frame for surface mounting	
Note	we reserve the right to make technical changes	

Items	Item no.
Smoke panel 4.8A (plastic housing)	WSC 204
Smoke panel 4.8A (steel housing)	WSC 204MH
Smoke panel 4.8A - closes the window actuators when activated by a smoke signal (plastic housing) <i>primary for CH</i>	WSC 204BZ

Accessories	Item no.
Alarm and fault module (master/slave)	WSA 301
Linking of wind/rain signal	WSA 302
Time ventilation module	WSA 303
Gap ventilation module	WSA 304B
ASV module	WSA 306
End module	WSA 432
Smoke detector end module	WSA 433
Replacement lock cylinder incl. two keys	WSA 440
Two spare keys	WSA 441